



S.O.U.L. OUTREACH SERVICES
SERVING OTHERS WITH UNCONDITIONAL LOVE

2025

**NON-PROFIT
ANNUAL REPORT**

TABLE OF CONTENTS

3	About Us
4	Programs & Initiatives
5-6	Financial Summary
7	Meal/Item Distribution
8	People Helped
9	Events & Partnerships
10	Volunteer Hours & Participation
11	Testimonials & Impact Stories
12	Photo Gallery
13	Contact & Conclusion



ABOUT US

S.O.U.L (Serving Others with Unconditional Love) Outreach services exists to uplift individuals and families by meeting practical needs with compassion, dignity, and consistent support. Through community service, volunteer initiatives, and outreach programs, we work to create a culture of kindness where everyone feels seen, valued, and empowered. Our mission is rooted in love and action, bringing people together to strengthen communities and inspire lasting impact.

VISION

Our vision is to build stronger, more connected communities where unconditional love is the foundation for service, support, and hope. We strive to create a world where every person has access to the care, resources, and encouragement they need to thrive.

MISSION

Our mission is to provide unwavering support and restore hope, one soul at a time. Through compassionate service, we remain committed to acting with love and resilience even in unconventional ways or challenging circumstances. We aim to transform lives through kindness, care, and dedication.

PROGRAMS & INITIATIVES

S.O.U.L SURVIVOR

S.O.U.L. Survivor provides direct support to individuals and families facing crisis by offering essential resources, compassionate outreach, and a community-centered approach to overcoming hardship. This initiative ensures that no one has to navigate difficult seasons alone.

FOOD FOR THE S.O.U.L

Food for the S.O.U.L focuses on addressing food insecurity through meal distributions, food drives, and community partnerships. By providing nutritious meals and accessible resources, we help families experience stability and dignity during challenging times.

S.O.U.L.FULL

S.O.U.L.Full brings joy, comfort, and connection to the community through seasonal outreach and special events. From holiday giveaways to school-year support, the program lifts the spirits of children, families, and individuals by meeting practical needs with unconditional love.

RIDE N' SERVE

Ride N' Serve mobilizes volunteers to deliver resources, transportation support, and on-the-ground assistance directly to those who need it most. This initiative strengthens our ability to reach underserved neighborhoods and ensures timely help when barriers prevent access to services.

FINANCIAL SUMMARY

In 2025, S.O.U.L Outreach continued its commitment to stewarding resources with integrity, transparency, and purpose. Every donation, grant, and partnership directly fueled our mission of Serving Others with Unconditional Love. While specific financial figures will be finalized and inserted into this section, the following areas outline the key components of our annual financial performance.

Sources typically include:

Individual Donations: Gifts from community supporters and recurring donors.

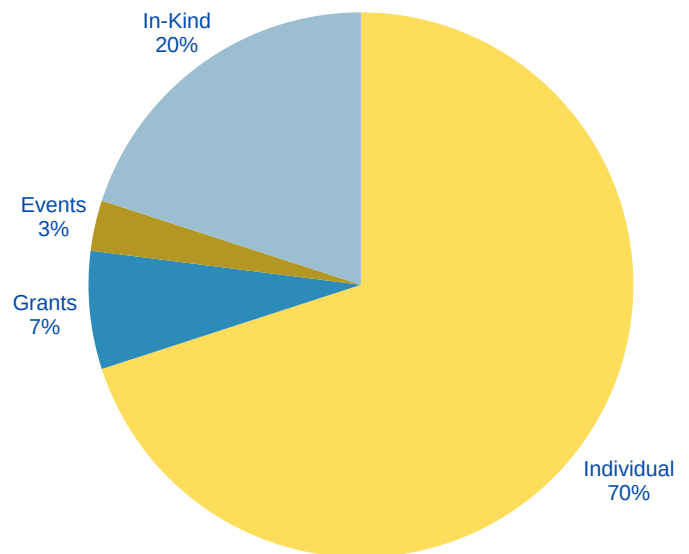
Corporate Sponsorships & Partnerships: Contributions from business partners supporting programs.

Grants: Funding received from local, state, or foundation grant opportunities.

Fundraising Events: Income generated through community events and outreach initiatives.

In-Kind Donations: Non-monetary contributions such as food, clothing, supplies, or services.

S.O.U.L Outreach remains committed to using every dollar with intention and accountability. Our financial practices reflect our belief that transparency builds trust, and trust strengthens our ability to serve our community with unconditional love.



FINANCIAL SUMMARY

EXPENSE ALLOCATION

S.O.U.L Outreach allocates its resources thoughtfully to maximize community impact. Key categories may include:

- Program Services: Direct costs for S.O.U.L Survivor, Food for the S.O.U.L., S.O.U.L.Full, Ride N' Serve, and other outreach initiatives
- Volunteer Support: Supplies, equipment, and training for volunteer teams
- Community Events: Seasonal distributions, holiday initiatives, and support gatherings
- Operations & Administration: Essential expenses that enable the organization to function effectively
- Fundraising & Development: Activities that support sustainability and donor engagement

IMPACT-DRIVEN INVESTMENTS

- Meal distributions and food outreach programs
- Emergency assistance for families in need
- Seasonal support drives and holiday initiatives
- Community events that cultivate connection, hope, and stability
- Volunteer-led service projects that expand S.O.U.L's reach

KEY FINANCIAL HIGHLIGHTS

Total Revenue: \$ 1450.00

Total Expenses: \$ 2734.07

Percentage of Funds Used Directly for Programs: 98 %

Number of Donors: 10

Value of In-Kind Donations (Estimated): \$5,000

MEAL/ITEM DISTRIBUTION

In 2025, S.O.U.L Outreach expanded its reach by meeting essential needs through consistent meal support, item distribution, and emergency relief. Our programs are designed to bring nourishment, stability, and hope to individuals and families across our community. With the help of dedicated volunteers, donors, and partners, we provided year-round assistance that made a meaningful and measurable difference.

MEALS DISTRIBUTED

Total Number of Meals Distributed: 556

- Food for the Soul distributions: 13
- Holiday Meal initiatives: 1
- Emergency food boxes: 5

ESSENTIAL ITEMS DISTRIBUTION

Total Essential Items Distributed: 524

- Hygiene kits: 68
- Clothing items: 72
- Household supplies: 334
- School or seasonal items: 50



DISTRIBUTION THROUGH PROGRAMS

S.O.U.L Survivor: Support for individuals overcoming hardship and rebuilding stability

Food for the S.O.U.L: Weekly nourishment for families experiencing food insecurity

S.O.U.L.Full: Community meals and fellowship events designed to feed both body and spirit

Ride N' Serve: Mobile outreach bringing items directly to underserved neighborhoods

PEOPLE HELPED

S.O.U.L Outreach exists to meet people where they are, offering support that restores dignity, hope, and stability. This year, our programs reached individuals and families from all walks of life, each facing unique challenges but united by a need for compassion and connection. Every interaction represented a moment of care, encouragement, and meaningful change.

WHO WE SERVED

- Individuals and families experiencing food insecurity
- Community members facing financial hardship or crisis
- Seniors and adults needing consistent support
- Youth and students benefiting from outreach events
- Individuals served through mobile and street outreach
- Families supported during holidays, back-to-school, and seasonal programs

HOW SUPPORT WAS DELIVERED

- Weekly meal distributions
- Care packages, clothing items, and hygiene kits
- Resource navigation and one-on-one support
- Community events that provided meals, fellowship, and connection
- Mobile outreach and onsite service through Ride N' Serve
- Emergency assistance for families in immediate need

IMPACT HIGHLIGHTS

Households supported: 23

Individual adults impacted: 507

Children & youth impacted: 34

Seniors assisted: 28

People reached through community events: 126



LIVES IMPACTED

EVENTS & PARTNERSHIPS

This year, S.O.U.L Outreach expanded its impact by showing up in the community, building meaningful relationships, and creating spaces where people could receive support, encouragement, and belonging. Our events and partnerships played a key role in amplifying our mission and helping us reach more individuals and families than ever before.

COMMUNITY EVENTS

Total community events hosted this year: 16

- Seasonal Outreach Events: Holiday distributions, back-to-school drives, and special gatherings that provided meals, clothing, and resources to families.
- Ride N' Serve Pop-Ups: Mobile outreach events that brought meals, care packages, and face-to-face support directly into neighborhoods.
- S.O.U.L. Survivor Workshops: Workshops and gatherings centered on encouragement, resiliency, and emotional support.
- Community Service Days: Volunteer clean-ups, donation drives, and collaborative service efforts.
- Faith-Based Fellowship Events: Activities that strengthened unity, hope, and connection among community members.

PARTNERSHIPS THAT MADE AN IMPACT

- Local churches and faith-based organizations
- Food banks and community kitchens
- Small businesses supporting donation drives
- Local schools participating in youth outreach
- Volunteer groups and service organizations
- City and neighborhood programs committed to community care

Number of Active Partnerships this Year: 6

New Partnerships Founded: 4

VOLUNTEER HOURS & PARTICIPATION

Our volunteers are the heartbeat of our mission. Their time, compassion, and willingness to serve made it possible for S.O.U.L Outreach to reach more people, host more events, and expand support into new areas of the community. Every hour given represented an act of love that strengthened our ability to transform lives.

HOW VOLUNTEERS SERVED

- Preparing, packing, and distributing meals
- Helping with clothing and hygiene kit distribution
- Assisting at community events and outreach days
- Supporting Ride N' Serve mobile efforts
- Managing donation drives and sorting items
- Providing encouragement, connection, and prayer
- Lending skills in planning, logistics, and set-up



THE POWER OF COMMUNITY PARTICIPATION

Volunteers showed up consistently, bringing warmth and dedication to every outreach effort. Their presence helped build trust within neighborhoods, strengthened relationships with families, and ensured that every program ran with excellence and care. S.O.U.L Outreach would not be able to serve at this level without the generosity and commitment of those who give their time.

VOLUNTEER IMPACT

Total Volunteer Hours: 57

Total Volunteers Engaged: 8

New Volunteers Added This Year: 3

Volunteer Groups & Organizations Involved: 3

TESTIMONIALS & IMPACT STORIES

The heart of S.O.U.L Outreach is felt most deeply through the voices of those we serve. These moments capture the real, personal impact of our programs and highlight how compassion, consistency, and community change lives. This section showcases the experiences of individuals, families, volunteers, and partners who were touched by our work throughout the year.

TESTIMONIAL HIGHLIGHTS

Testimonial #1

“Thank you for what you are doing for our community. It is so sweet of you all to donate to our pajama night.”

— Kristi Owens, JGOC First Lady & Pastor

Testimonial #2

“I come out because this is what we need and I have always wanted to serve my community while being in the community.”

— SOUL Volunteer, Food for Soul Event

Testimonial #3

“When can you all come back the group loved Orlando and all the bingo prizes.”

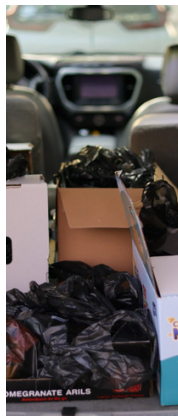
— Betty George, Super Senior Bingo Lead

Testimonial #4

“What you all are doing is truly a blessing to others.”

— Anonymous

PHOTO GALLERY



CONCLUSION

As S.O.U.L Outreach reflects on this year's accomplishments, we are humbled by the resilience of our community and the generosity of those who stand beside us. Every meal served, every family supported, and every outreach effort was made possible through the unwavering dedication of our volunteers, partners, and donors. While the needs around us continue to grow, our commitment to serving others with unconditional love remains stronger than ever.

As we look toward the year ahead, we remain focused on expanding our impact, strengthening our partnerships, and continuing to meet people where they are with compassion, dignity, and hope. Thank you for believing in our mission and joining us in this life-changing work.

CONTACT US

-  **407.815.5351**
-  **WWW.SOULOUTREACH.ORG**
-  **SOULOUTREACHSERVICES@GMAIL.COM**
-  **1317 EDGEWATER DR #3773 ORLANDO, FL 32804**
-  **@SOULOUTREACHSERVICES**



S.O.U.L OUTREACH SERVICES
SERVING OTHERS WITH UNCONDITIONAL LOVE